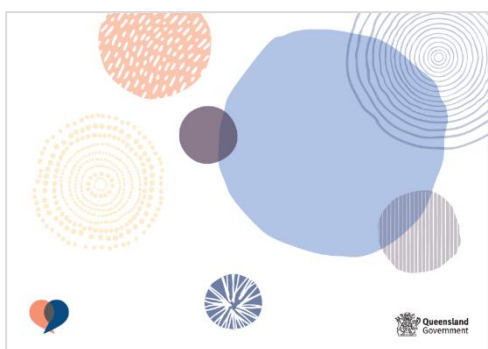


# Compassionate care door signs

## Design stories

There are two door signs available: one suitable for use with all patients, and the other with people who identify as Aboriginal and/or Torres Strait Islander. The broad audience sign uses the **Care at End of Life design**, while the Aboriginal and Torres Strait Islander sign is based on the **Making Tracks artwork**.

### Care at End of Life design

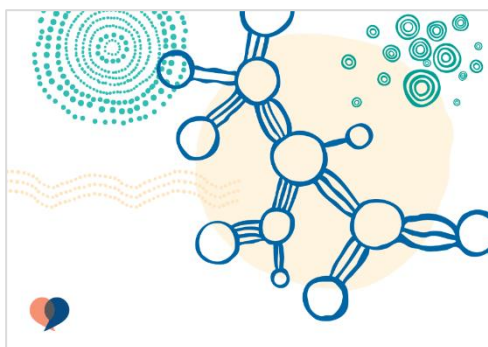


Since 2017, a consistent design has been applied to Queensland Health information and resources related to care at end of life. This is to ensure they are easily recognisable to consumers, clinicians and the broader community.

The graphics and colours on this door sign draw upon this design, which was chosen by consumers. Blue was selected as it is associated with trust, responsibility, security, and calm. The salmon reflects warmth, balance, energy, and community.

The Care at End of Life logo represents people coming together to talk and support each other. Two shapes resembling quotation marks or speech bubbles come together to form a heart.

### Making Tracks artwork story



This artwork represents Aboriginal and Torres Strait Islander cultures in Queensland. It speaks of the importance of traditional and cultural sensitivities, how these are communicated in the modern day health system and how health professionals can best provide health services for Aboriginal and Torres Strait Islander Queenslanders through best practice. The central circular motif represents Health in Queensland and the meeting place where people come to trade knowledge about best health practices and procedures.

The pathways leading both in and out of this central motif represent people travelling from different professions, different communities and different country, and the importance of everyone contributing equally to this journey. A journey of change and growth for a brighter, healthier and happier future

for all Aboriginal and Torres Strait Islander Queenslanders.

The surrounding markings and motifs represent the important network of people from these communities, their connection to each other, and how they work together to empower Aboriginal and Torres Strait Islander Queenslanders to have long, healthy, productive lives.